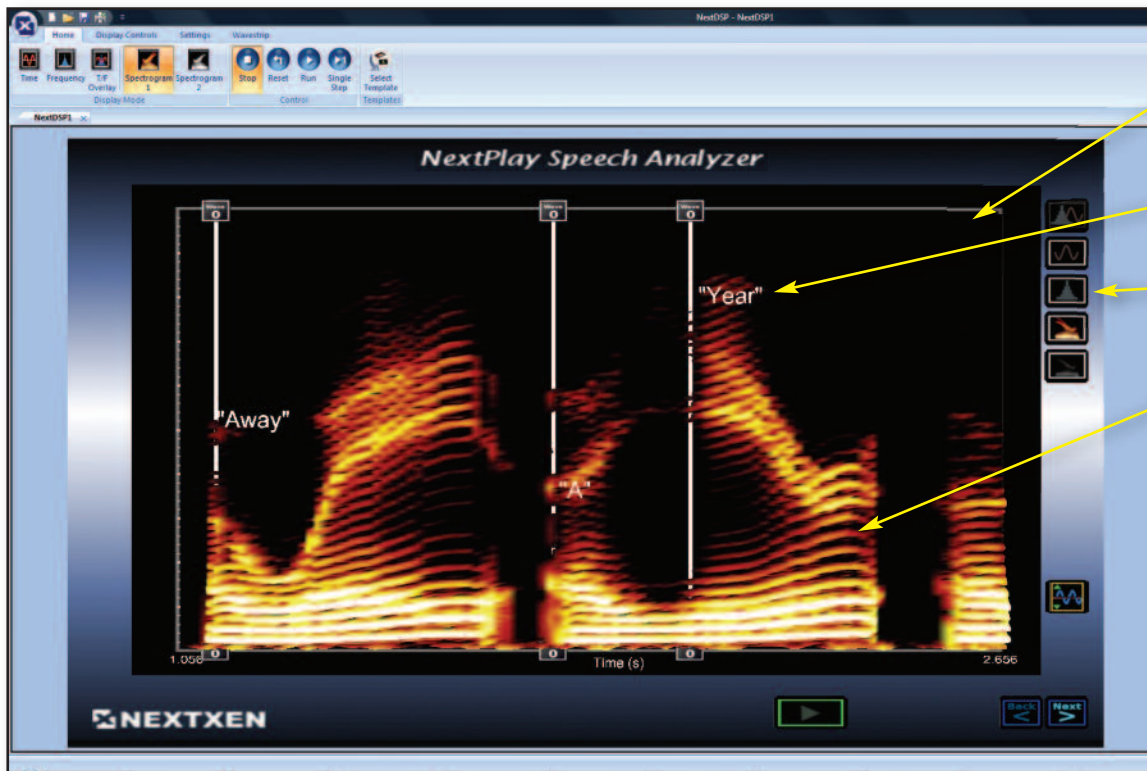


NextPlay™ Speech Analyzer

Powerful spectrogram software for your audiology lab



Drag and drop waveform files in a variety of formats

Tag your data in both Time and Spectrogram displays

Intuitive user interface - easy to learn, easy to use

Live real-time Spectrogram generation

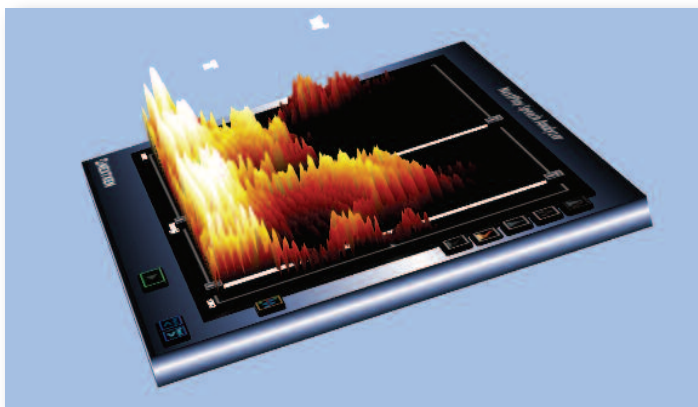
Features

- Affordable - Runs on PC's with standard sound cards
- Variety of analyses options
- Windowing, framesize, frequency resolution choices
- Control of frame overlap
- Multiple displays allow for comparing spectrograms

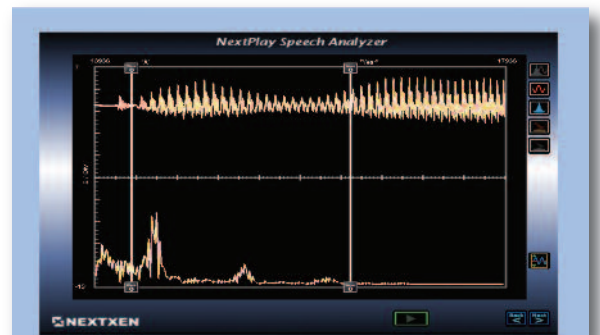
NextPlay Speech Analyzer provides professional real-time spectrograms on your PC using any standard sound card.

Dynamic New Technology

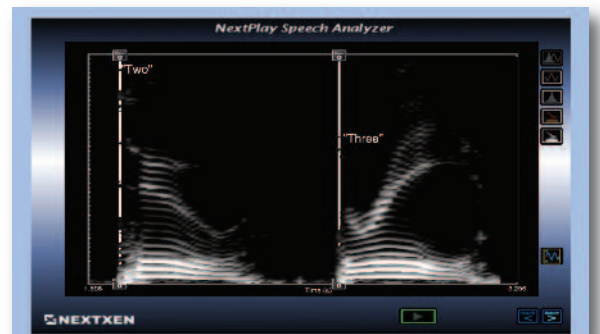
For less than \$500 you can equip yourself with the latest technology for speech analysis. Intuitive user interface requires little or no time studying documentation – put it to use right away analyzing data in real time or from disk files.



Incredible live 3-D rotation allows for better analysis from all angles - even while running live



Quick panning/scrolling of waveforms, drag and drop file support, and markers augment your analysis



Traditional monochrome spectrogram is available as an analysis display



For more information visit us at www.nextxen.com or email us at info@nextxen.com